

Utah Area Fall Assembly Delegate's Presentation

23 SEPTEMBER 2023

Practicing the Seventh Tradition

Spiritual Principles

Lois quote - "It's all spiritual!"

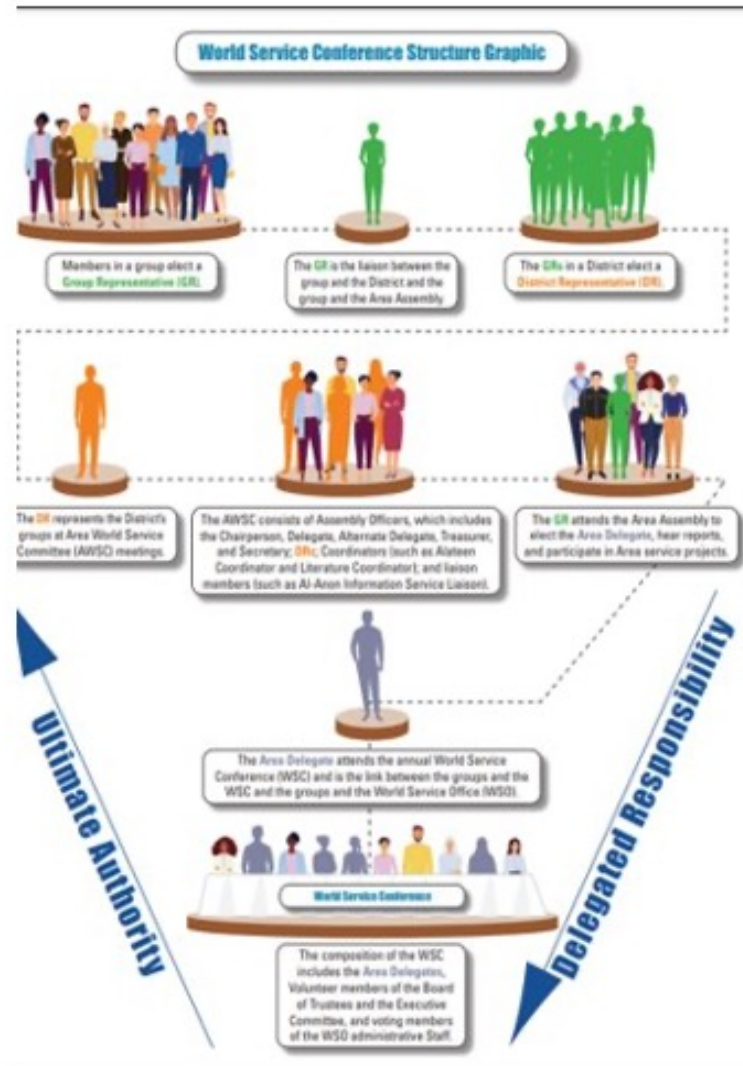
Abundance - Always enough

Prudence - Spending wisely

Equality - Equalized Expense

Gratitude - Thanks to all!

WSC Structure and the Flow of Our Seventh Tradition



Let It Begin with Me!

Individual contributions at face-to-face meetings

Electronic methods: Zelle, Venmo,
PayPal, etransfer (Canada)

Appeal letters

Auto withdrawals

Birthdays

Memorials

Bequests

Myths about How to Contribute



Give close to home the most



Use a formula that has been passed on from Treasurer to Treasurer



Send the most to the service arm that needs it the most



If a service arm has a deficit budget, send them the most



Group Budgets

- ▶ Group Conscience
- ▶ Rent/platform fees, GR expenses, literature, service arms based on their budgets
- ▶ Example: My home group (see next page)

Group Budget Example

Expense Item	Annual Cost
Rent (\$25/month)	\$300
GR travel to Assembly (two) and District mtgs (12)	\$670
Literature for newcomers	\$70
Total	\$1,040

$$\$1,040/52 = \$20$$

District Finances

District budgets

DR expenses, workshops, hosting
service meetings

Excess funds can be distributed to
AIS/Area/WSO

Example: My District (see next page)

District Budget Example

Expense Item	Annual Cost
Rent	\$240
DR expenses to AWSC/ Assemblies (four)	\$860
Annual Workshop	\$230
Total	\$1,330
Meetings in District = 15	

AIS/LDC Budgets

Purpose: outside the links of service

Extra funds can go to Area and WSO

Rent, meeting lists, newsletter, PO, Alateen, service workshops

Example: My AIS/LDC

- Expenses outside of Literature = \$12,000
- Groups supporting AIS/LDC = 80
- Cost per group per year = \$150

Area Budgets

Area budgets

Rent/platform
fees, Officer/Coordinator expenses

Equalized Expense to WSO

Example: My Area

- Expenses (Alateen, public outreach, Conventions, AWSC, Assemblies, travel, rent) of \$40,000
- 320 groups
- \$125 per group per year

WSO Budget

Provides services worldwide

- See [back of appeal letter](#)

Main sources of income: contributions and literature sales

Special projects—can only be funded if resources available

3 Funds: General, Reserve, Building

WSO spends approx. \$300/group/year (calculated annually)

Example Cost per Group by Service Arm

Service Arm	Number of Groups	Annual Expenses	Annual Cost per Group	Percentage
WSO	13,000	Varies	\$300	45%
Area	325	\$40,000	\$125	19%
District	15	\$1,300	\$88	13%
AIS/LDC	80	\$12,000*	\$150	23%

*Excludes literature purchases

Group Budgets Revisited

Group expenses (rent, GR expenses, literature given to newcomers): \$1,040

Group contributions to service arms based on budgets: \$663

Total Expenditures: \$1,703

Average number of members: 25

Average per week per member to be fully self-supporting: \$1.31

How to Make Contributions



- ▶ Go to al-anon.org under “Make a Contribution”
- ▶ Go to “Contributions” in the *Al-Anon Family Groups Mobile App*
- ▶ Send a check or money order to:
AFG, Inc.
1600 Corporate Landing Parkway
Virginia Beach, VA 23454-5617